

TO THE BEST OF THE ARCHITECT'S OR THE ENGINEER'S KNOWLEDGE, THESE PLANS AND SPECIFICATIONS COMPLY WITH ALL CITY, COUNTY AND STATE BUILDING REGULATIONS AND APPLICABLE FIRE SAFETY DEPARTMENT AND LOCAL AUTHORITY IN THE SECTION AND CHAPTER 633, F.L. STATUTES.

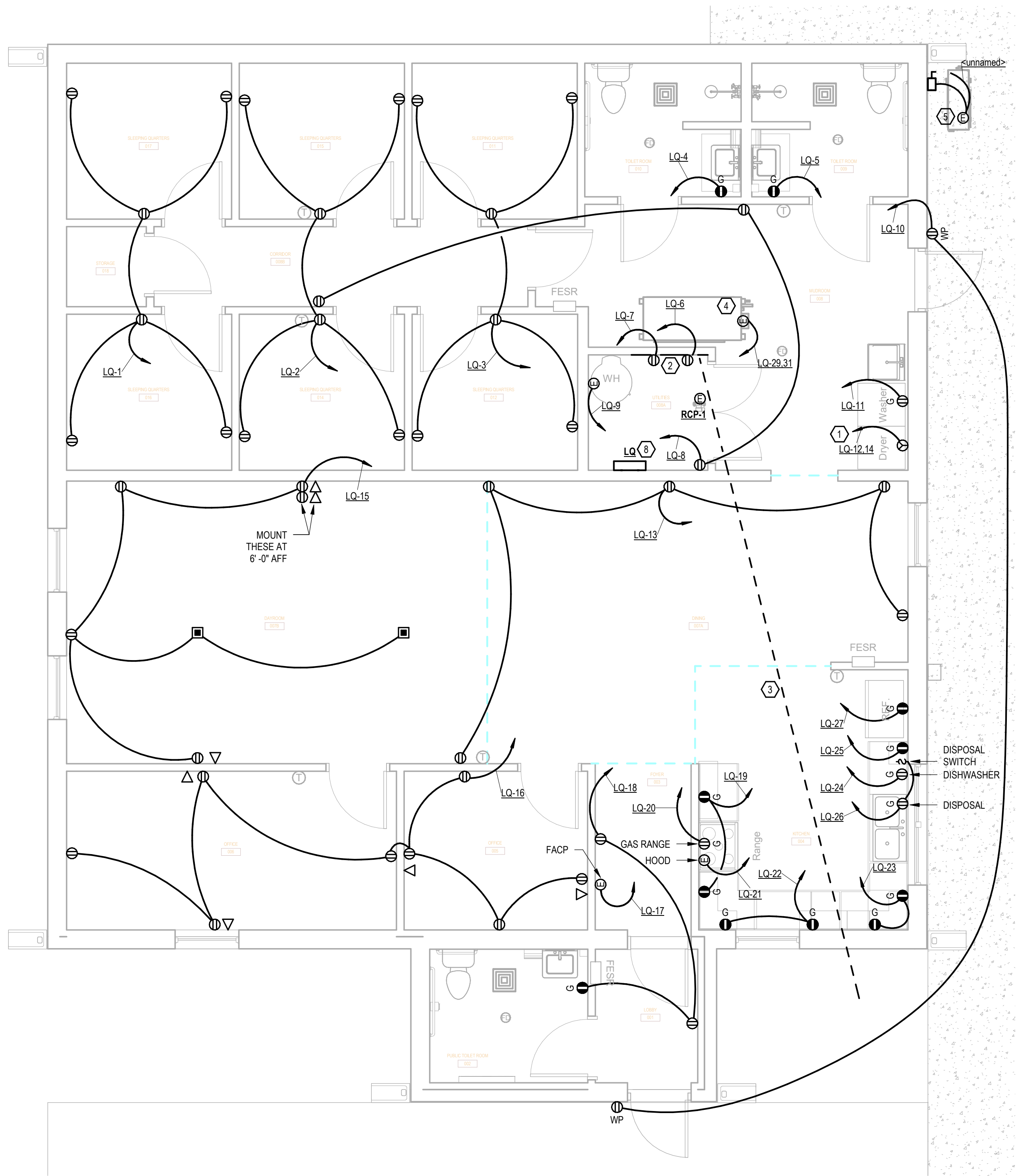


BRADFORD COUNTY SLEEPING QUARTERS
13641 SOUTHWEST COUNTY ROAD 227
STARKE, FLORIDA 32091

REVISIONS			
NO.	DATE	REF.	BY

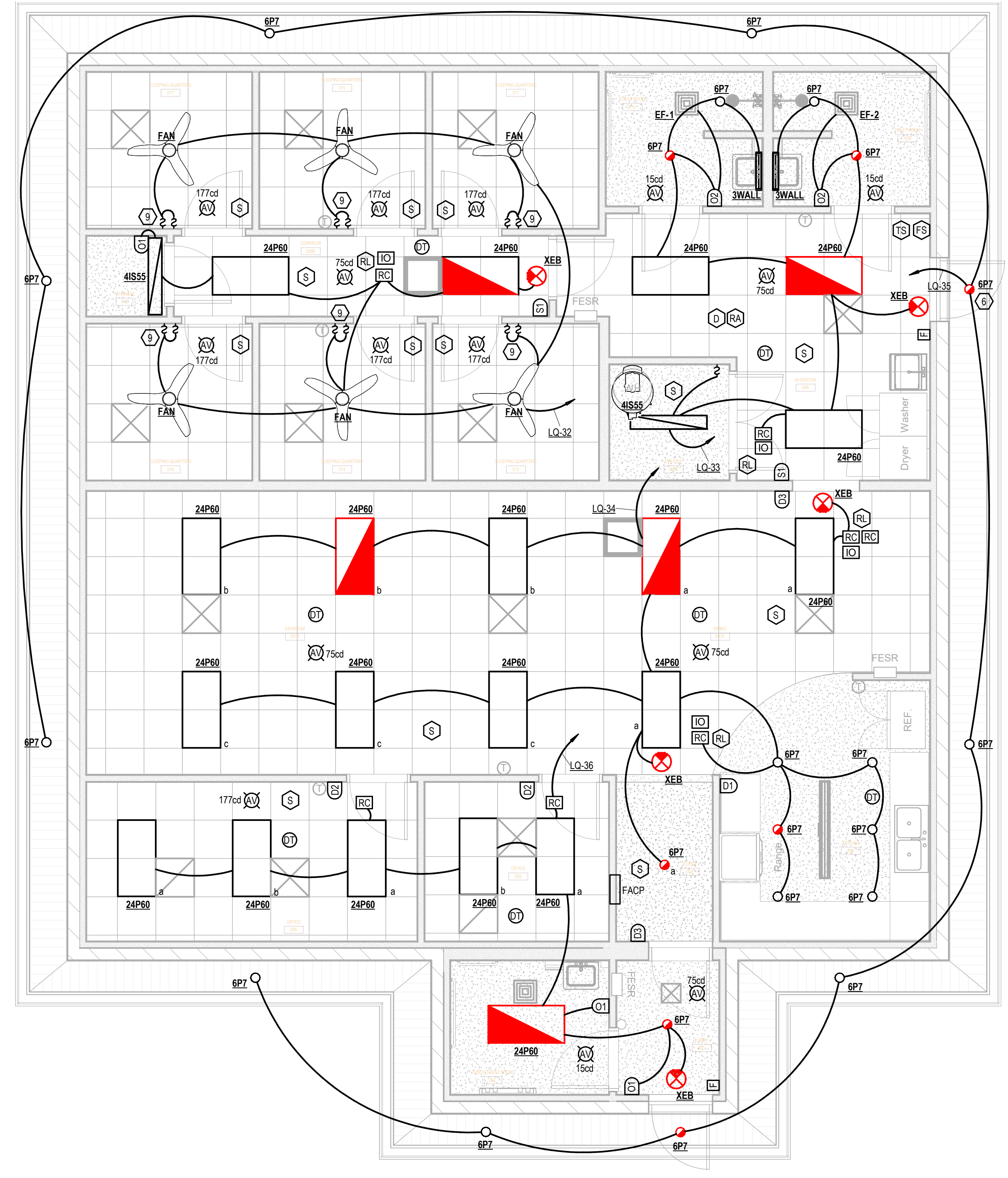
DRAWING STATUS: 100% CONSTRUCTION DOCUMENTS	
ISSUE DATE: 09/27/2024	
DRAWN BY: AKIN	CHECKED BY: AKIN
PROJECT NUMBER: 24064	
DRAWING TITLE: PLANS	

SHEET NO. E101
DATE/TIME STAMP: 9/30/2024 4:30:10 PM

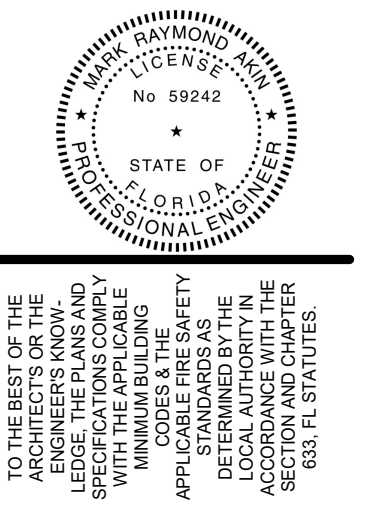


1 FLOOR PLAN - POWER
SCALE: 1/4" = 1'-0"

- KEY NOTES**
1. DRYER CIRCUIT SHALL BE 3#8, #8G, 3/4"C. RECEPTACLE SHALL BE 14-30R.
 2. PROVIDE 48"x48"x3/4" PLYWOOD BACKBOARD FOR OWNER'S EQUIPMENT.
 3. PROVIDE (2)2"C AND (2)1"C FROM BACKBOARD TO STUBBED 5' OUTSIDE BUILDING FOOTPRINT.
 4. AHU CIRCUIT SHALL BE 3#12, #12G, 1/2"C, DISCONNECT. PROVIDE A 20A 2 POLE TOGGLE SWITCH.
 5. HP CIRCUIT SHALL BE 3#10, #10G, 3/4"C, DISCONNECT. PROVIDE 60I2 NON-FUSED NEMA 3R HEAVY DUTY SAFETY SWITCH.
 6. PROVIDE A PHOTOCELL MOUNTED ON NORTH FACE AND CONTROL EXTERIOR LIGHTS THROUGH PHOTOCELL.
 7. CONNECT EF TO LIGHT SWITCH.
 8. COORDINATE WITH PLUMBING AND HVAC AND ENSURE PROPER NEC DEDICATED EQUIPMENT SPACE AND WORKING CLEARANCE FOR PANELBOARD.
 9. CONNECT ONE SWITCH TO FAN AND ONE SWITCH TO LIGHT KIT.



2 RCP - LIGHTING
SCALE: 1/4" = 1'-0"



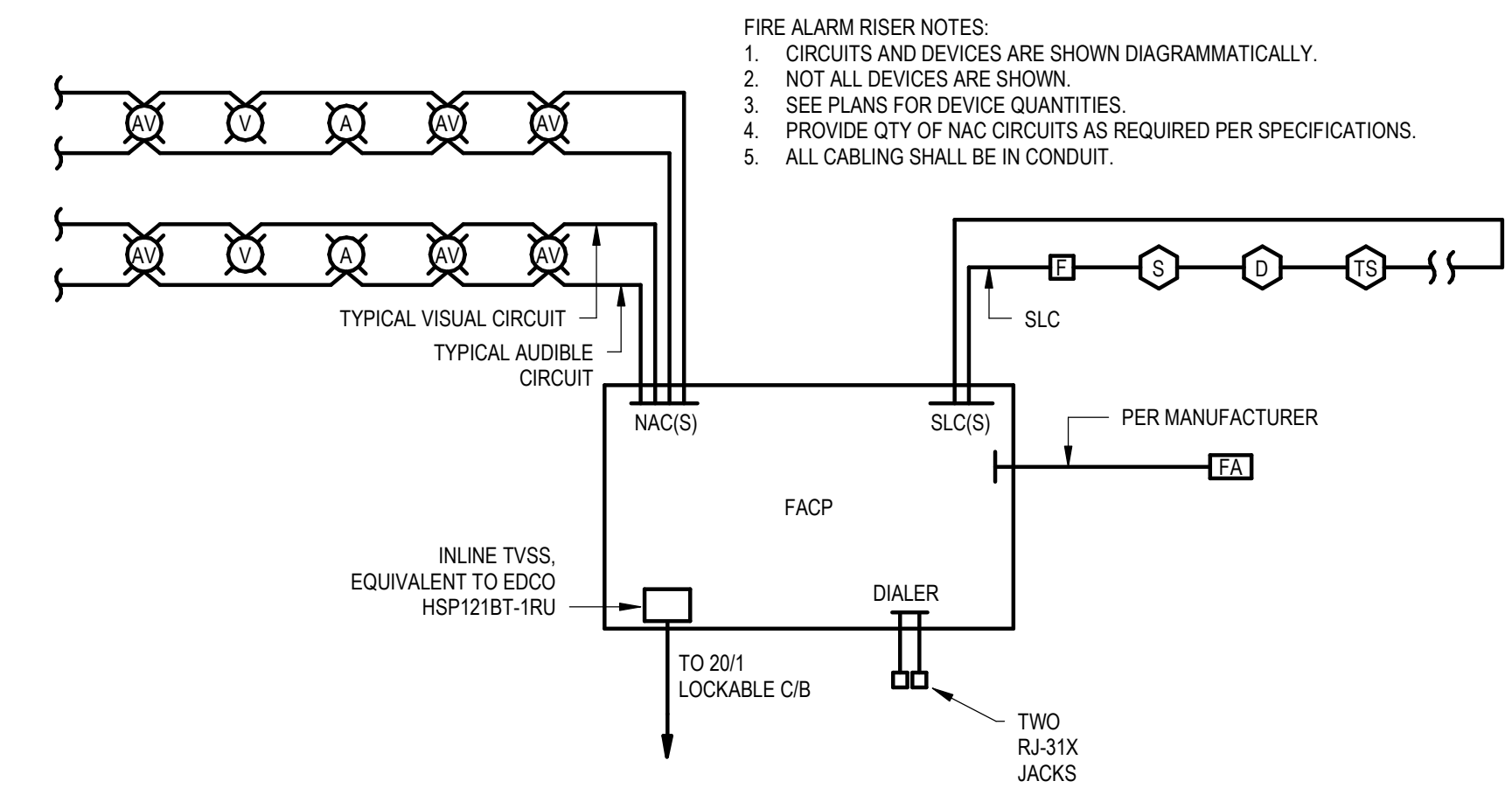
BRADFORD COUNTY SLEEPING QUARTERS
13641 SOUTHWEST COUNTY ROAD 227
STARKE, FLORIDA 32091

REVISIONS			
NO.	DATE	REF.	BY

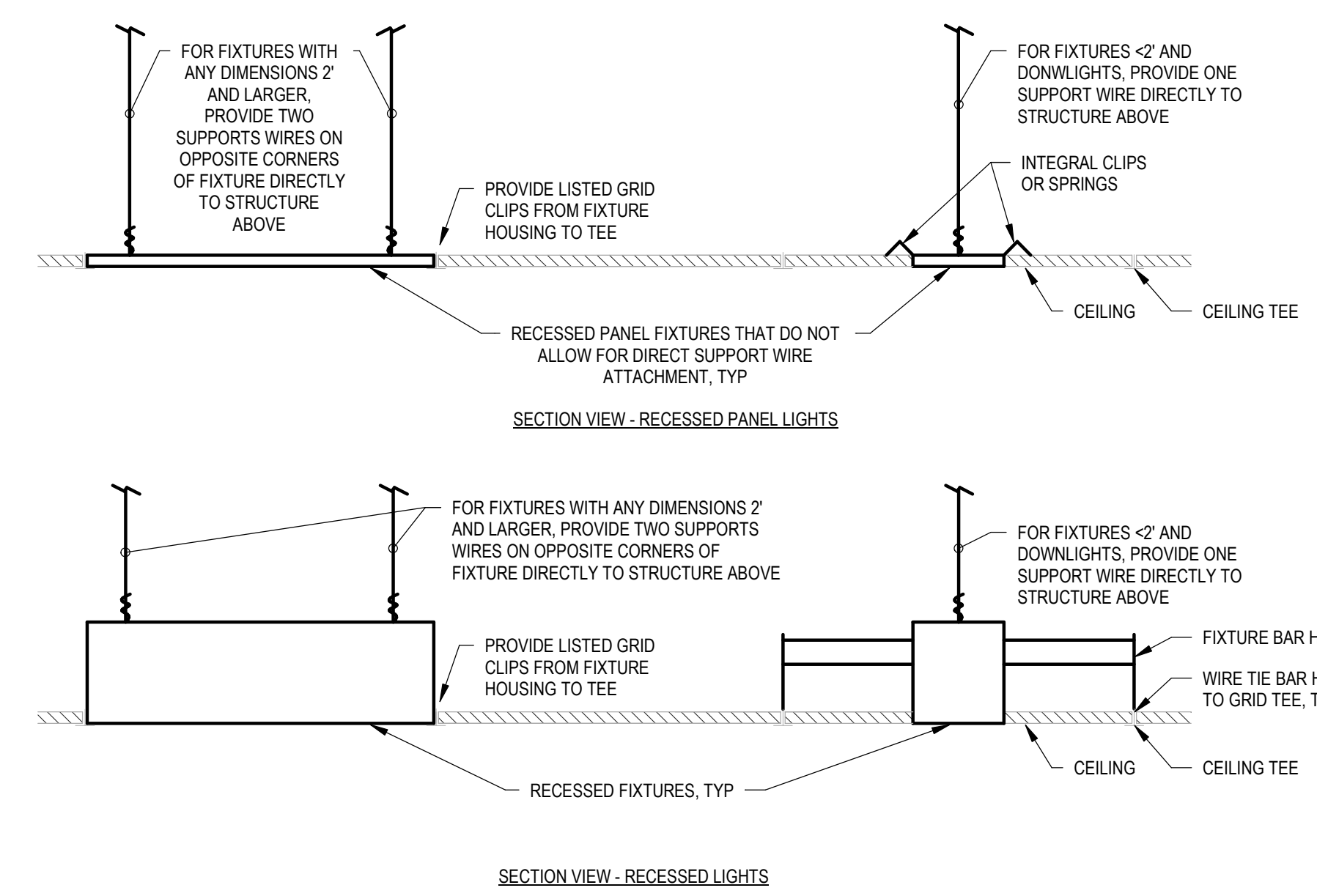
DRAWING STATUS:	
100% CONSTRUCTION DOCUMENTS	
ISSUE DATE:	
09/27/2024	
DRAWN BY:	CHECKED BY:
AKIN	AKIN
PROJECT NUMBER:	
24064	
DRAWING TITLE:	
DETAILS	

SHEET NO.
E201
DATE/TIME STAMP:
9/30/2024 4:30:11 PM

Akin Brooks Engineering
AKIN BROOKS ENGINEERING, INC. FL LICENSE 35307
14260 W NEWBERRY RD #115 352.281.7104
NEWBERRY, FL 32669 AB23023 AKINBROOKS.COM

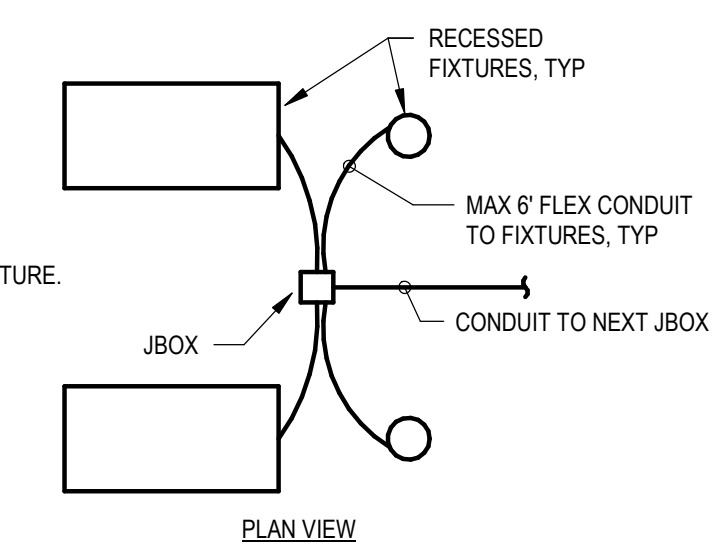


4 FIRE ALARM SYSTEM RISER DIAGRAM
NOT TO SCALE

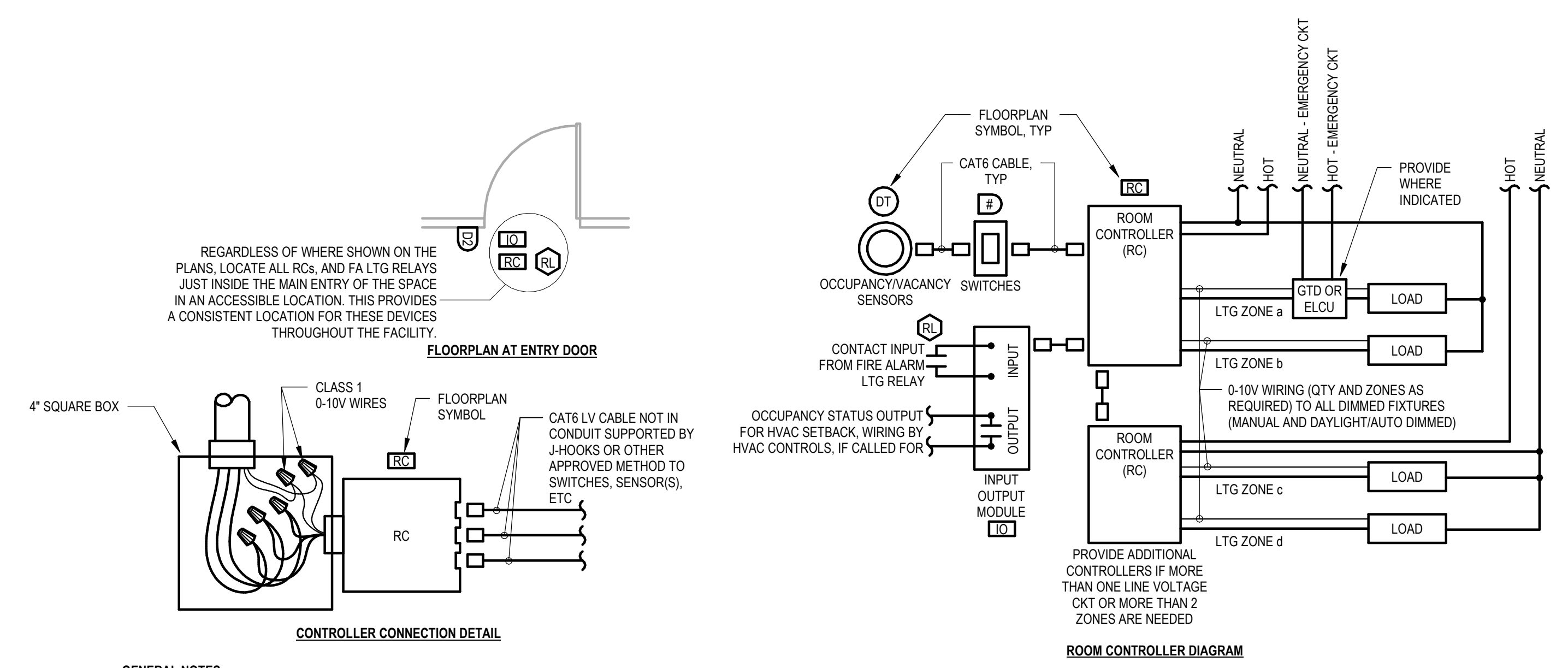


2 RECESSED LIGHT FIXTURE INSTALLATION DIAGRAM
NOT TO SCALE

NOTES:
1. CIRCUITING SHOWN ON PLANS IS DIAGRAMMATIC.
2. DO NOT RUN CONDUIT DIRECTLY FROM FIXTURE TO FIXTURE.
3. JBOXES SHALL BE ACCESSIBLE.
4. SUPPORT FIXTURES DIRECTLY FROM STRUCTURE.



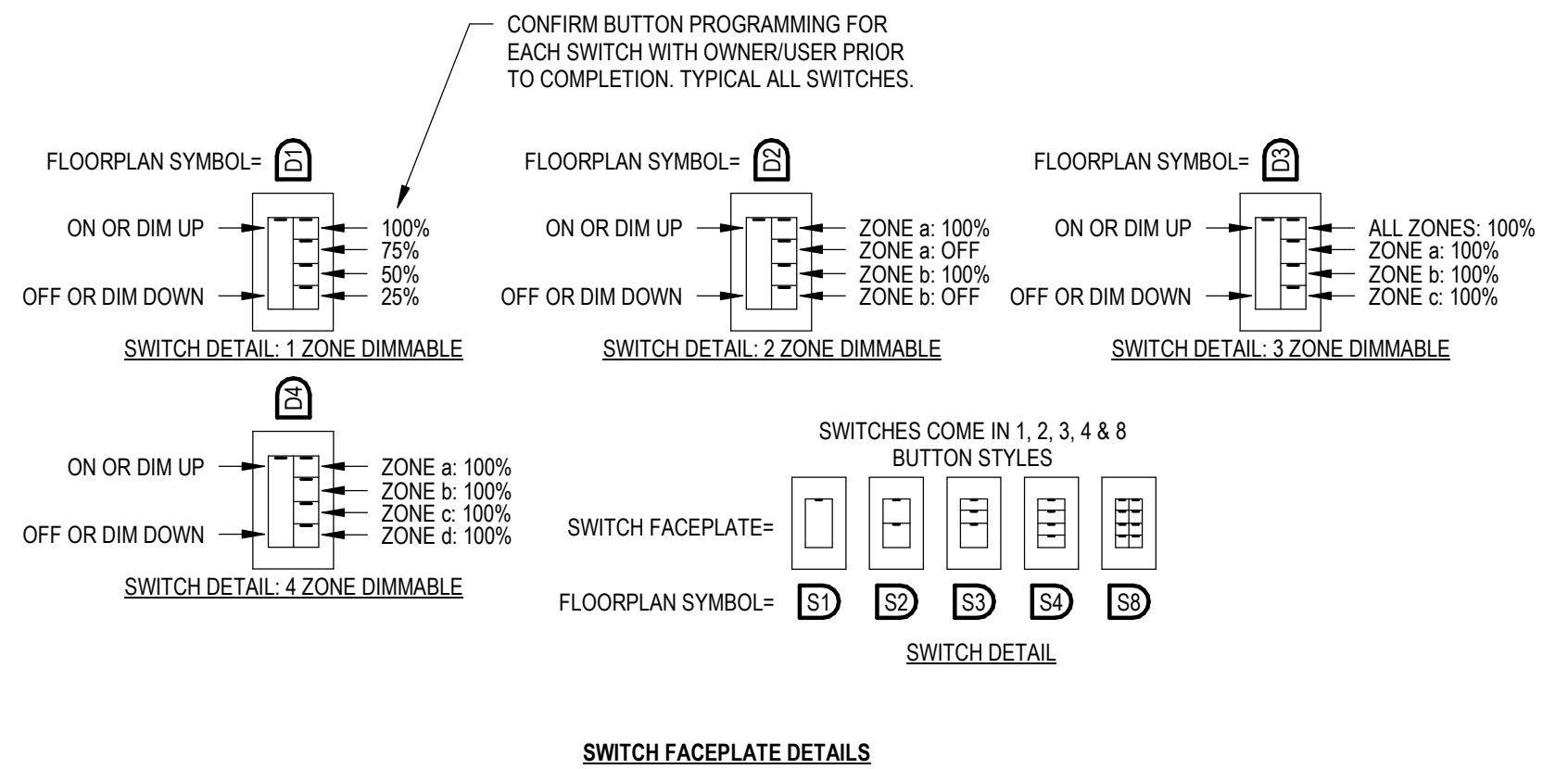
1 RECESSED LIGHT FIXTURE CONDUIT CONNECTIONS DIAGRAM
NOT TO SCALE



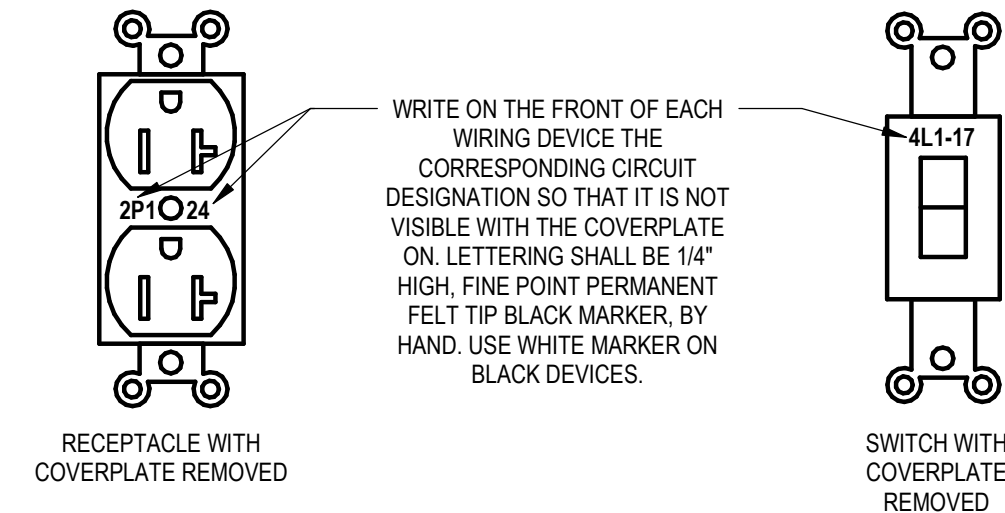
3 ROOM CONTROLLER DIAGRAM
NOT TO SCALE

- GENERAL NOTES:**
- THIS DIAGRAM IS NOT INTENDED TO SHOW THE ACTUAL QTY OF DEVICES. SEE PLANS FOR DEVICE QTY.
 - NOT ALL INSTANCES WILL REQUIRE ALL CONNECTIONS AND DEVICES SHOWN.
 - CAT6 CABLE COLOR SHALL BE YELLOW.
 - PROVIDE 10' OF NEATLY COILED SLACK ABOVE EACH SENSOR TO ALLOW FOR RELOCATING AS NEEDED FOR HVAC DIFFUSERS AND OTHER OBSTRUCTIONS.
 - PROVIDE INPUT OUTPUT MODULE IF REQUIRED BY FIA OR HVAC. SEE FIA SHEETS AND MECHANICAL (OR IC) SHEETS FOR QTY REQUIRED.
 - VERIFY WIRING CONFIGURATION WITH ACTUAL SENSORS, CONTROLLERS & DEVICES BEING SUPPLIED. PROVIDE MANUFACTURER'S RECOMMENDED LV CABLING.
 - WHERE MORE THAN ONE LINE VOLTAGE CKT IS REQUIRED, PROVIDE ADDITIONAL CONTROLLERS AS REQUIRED. SEE PLANS.
 - WHERE MORE THAN TWO ZONES ARE REQUIRED, PROVIDE ADDITIONAL CONTROLLERS AS REQUIRED. SEE PLANS.
 - LIGHTING SPECIFICALLY CALLED OUT ON THE PLANS AS 24/7 SHALL NOT BE CONTROLLED BY THIS SYSTEM.
 - IF ALL OF THE SWITCH STATIONS ARE TYPE S4, AND THERE ARE NO DAYLIGHT SENSORS, THEN THE FIXTURES ARE NOT DIMMED & 0-10V CABLE IS NOT REQUIRED.
 - IF THERE ARE DAYLIGHT SENSORS, THEN THE FIXTURES ARE DIMMED AND 0-10V CABLE IS REQUIRED.
 - IF ANY OF THE SWITCH STATIONS ARE TYPE D#, THEN THE FIXTURES ARE DIMMED AND 0-10V CABLE IS REQUIRED.
 - 0-10V DIM WIRING METHOD: CLASS 1. PROVIDE AS REQUIRED FROM CONTROLLERS TO ALL DIMMED LIGHT FIXTURES (MANUAL & DAYLIGHT DIMMED). WIRES SHALL BE #16AWG, SAME TYPE AS LINE VOLTAGE AND APPROPRIATE PINK & VIOLET 0-10V COLOR.
 - IF RC IS LOCATED ABOVE CEILING, PROVIDE A DYMO TYPE LABEL ON BOTTOM OF CEILING INDICATING "LIGHTING CONTROLS".
 - BASIS OF DESIGN IS WATTSTOPPER DLM.

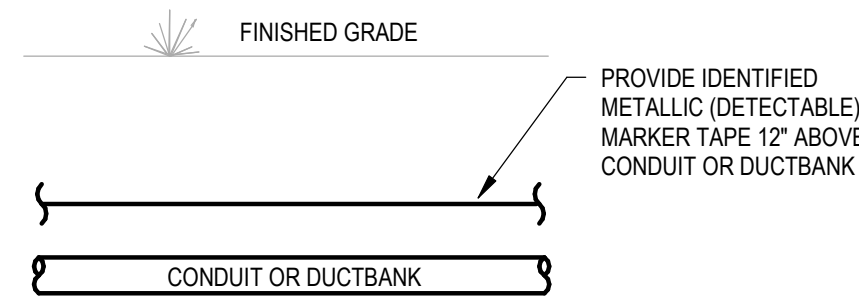
- SEQUENCE OF OPERATIONS:**
- BASIC ROOM WITH "AUTO-ON" (FOR USE IN SPACES WITH MULTIPLE ZONES):**
- IF PROVIDED WITH FIRE ALARM LTG RELAY: LIGHTS SHALL TURN ON TO 100% AND STAY ON DURING A FIRE ALARM CONDITION (PER 2021 NFPA 101 7.8.1.2.2(5)).
 - WITH LIGHTS OFF, LIGHTS SHALL AUTOMATICALLY TURN ON TO NO MORE THAN 50% WHEN SENSORS DETECT OCCUPANCY (PER 2023 FBC C405.2.2.2).
 - LIGHTS SHALL REQUIRE MANUAL CONTROL TO TURN ON TO MORE THAN 50%.
 - ALL LIGHTS SHALL AUTOMATICALLY TURN OFF AFTER 20 MINUTE TIME DELAY OF NOT SENSING OCCUPANCY.
- BASIC ROOM WITH "MANUAL-ON" (FOR USE IN SPACES WITH ONLY ONE ZONE):**
- IF PROVIDED WITH FIRE ALARM LTG RELAY: LIGHTS SHALL TURN ON TO 100% AND STAY ON DURING A FIRE ALARM CONDITION (PER 2021 NFPA 101 7.8.1.2.2(5)).
 - WITH LIGHTS OFF, LIGHTS SHALL REQUIRE MANUAL ON AT SWITCH LOCATION(S) (PER 2023 FBC C405.2.2.2).
 - ALL LIGHTS SHALL AUTOMATICALLY TURN OFF AFTER 20 MINUTE TIME DELAY OF NOT SENSING OCCUPANCY.
- HALLWAYS, LOBBIES, ETC WITH NO LOCAL SWITCHES:**
- IF PROVIDED WITH FIRE ALARM LTG RELAY: LIGHTS SHALL TURN ON TO 100% AND STAY ON DURING A FIRE ALARM CONDITION (PER 2021 NFPA 101 7.8.1.2.2(5)).
 - WITH LIGHTS OFF, LIGHTS SHALL AUTOMATICALLY TURN ON TO 100% WHEN SENSORS DETECT OCCUPANCY.
 - ALL LIGHTS SHALL AUTOMATICALLY TURN OFF AFTER 20 MINUTE TIME DELAY OF NOT SENSING OCCUPANCY.



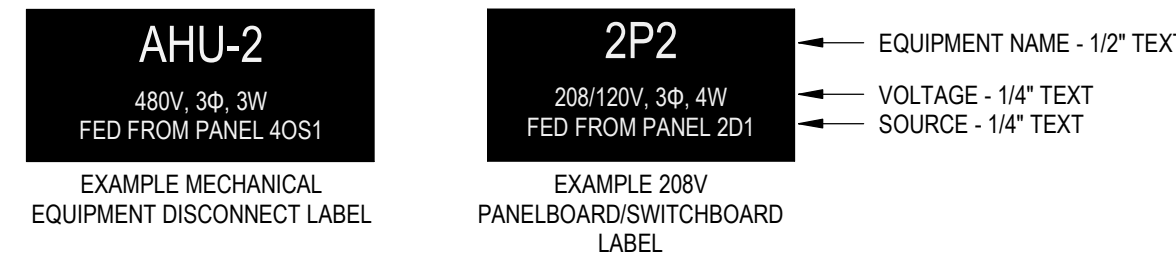
Akin Brooks Engineering
AKIN BROOKS ENGINEERING, INC. FL LICENSE 35307
14260 W NEWBERRY RD #115 352.281.7104
NEWBERRY, FL 32669 AB23023 AKINBROOKS.COM



1 WIRING DEVICE LABEL DETAIL
NOT TO SCALE

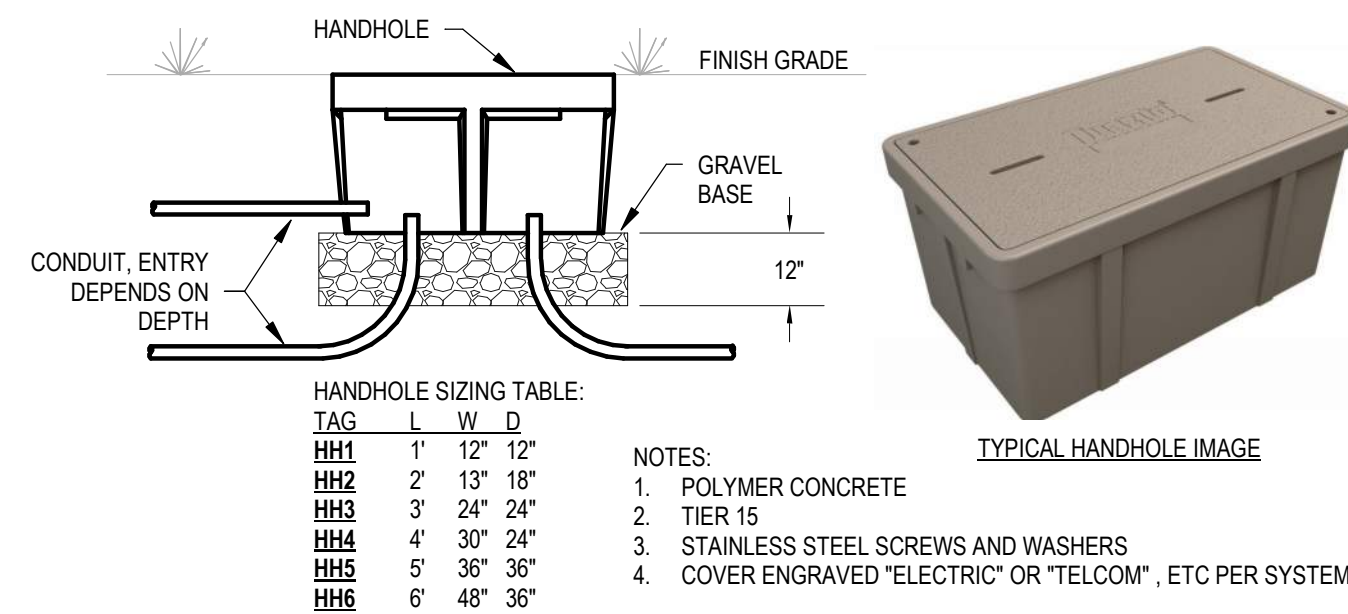


3 BURIED CONDUIT MARKER DETAIL
NOT TO SCALE

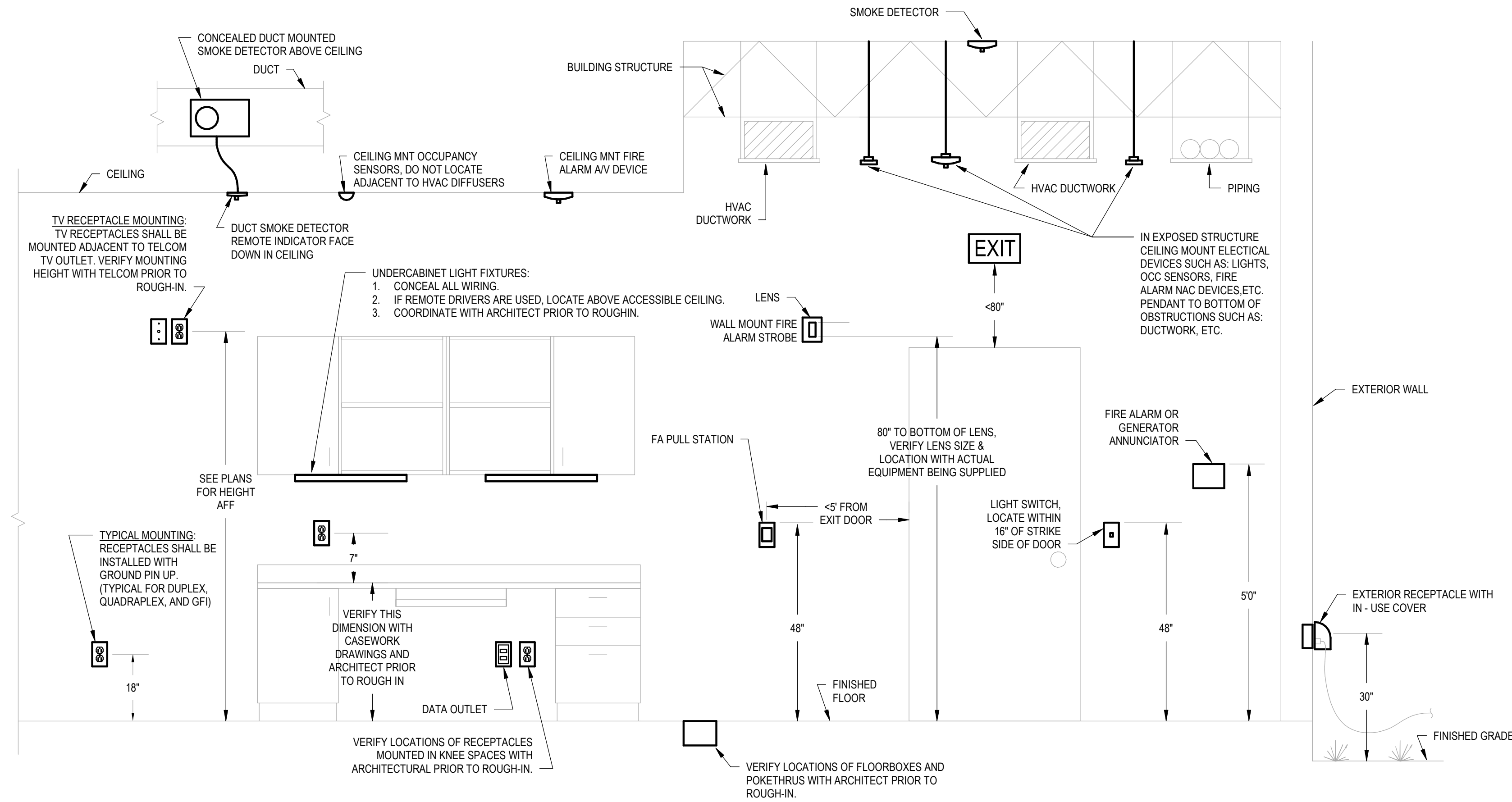


- NOTES:
- ENGRAVED 1/16" THICK PLASTIC TAG.
 - TAG SHALL HAVE ALL EDGES BEVELED AND SMOOTH.
 - SECURE TAG WITH A MINIMUM OF 2 CHROME (STAINLESS STEEL FOR WET OR DAMP LOCATIONS) SCREWS. ADHESIVE BACKING, GLUE, TAPE, ETC IS NOT ALLOWED.
 - DIMENSIONS SHALL BE AS REQUIRED TO FIT APPROPRIATE TEXT.

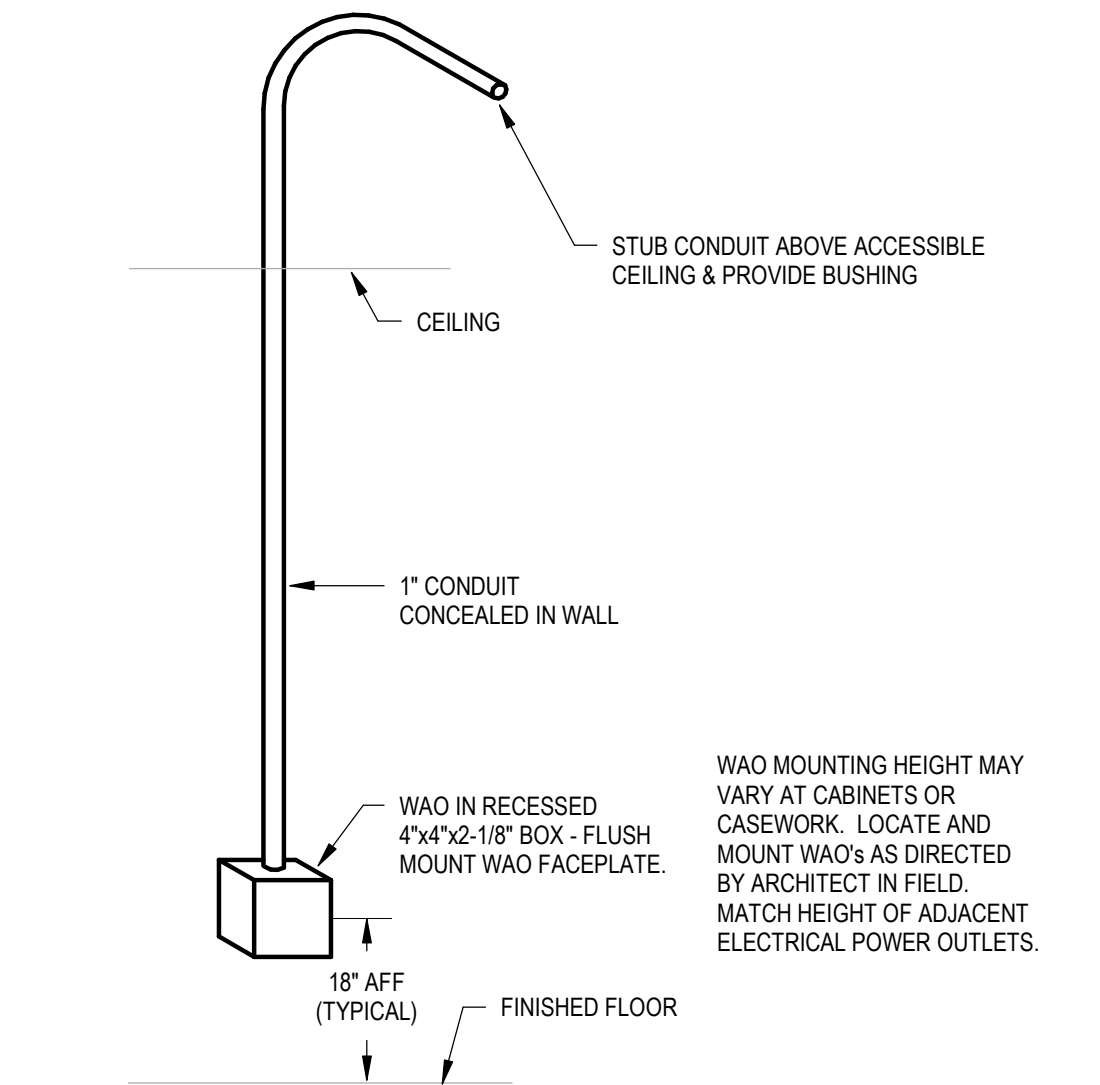
4 TYPICAL EQUIPMENT LABELING DETAIL
NOT TO SCALE



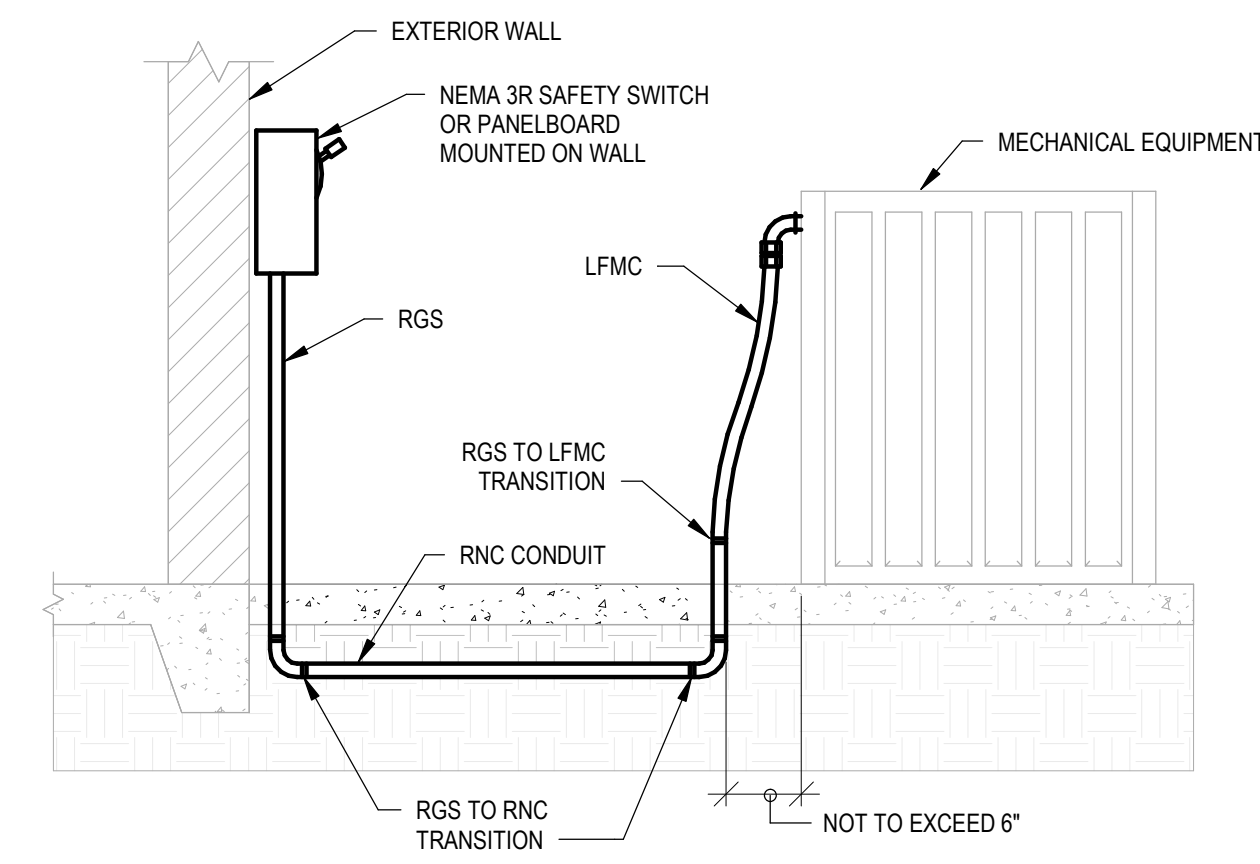
5 HANDHOLE DETAIL
NOT TO SCALE



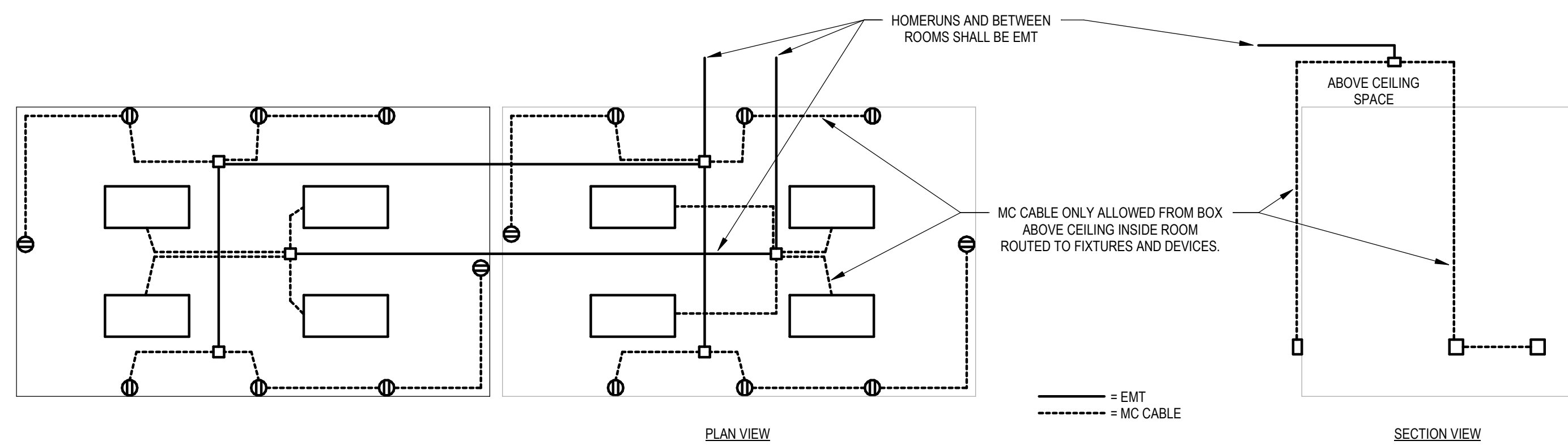
2 TYPICAL DEVICE MOUNTING DETAIL
NOT TO SCALE



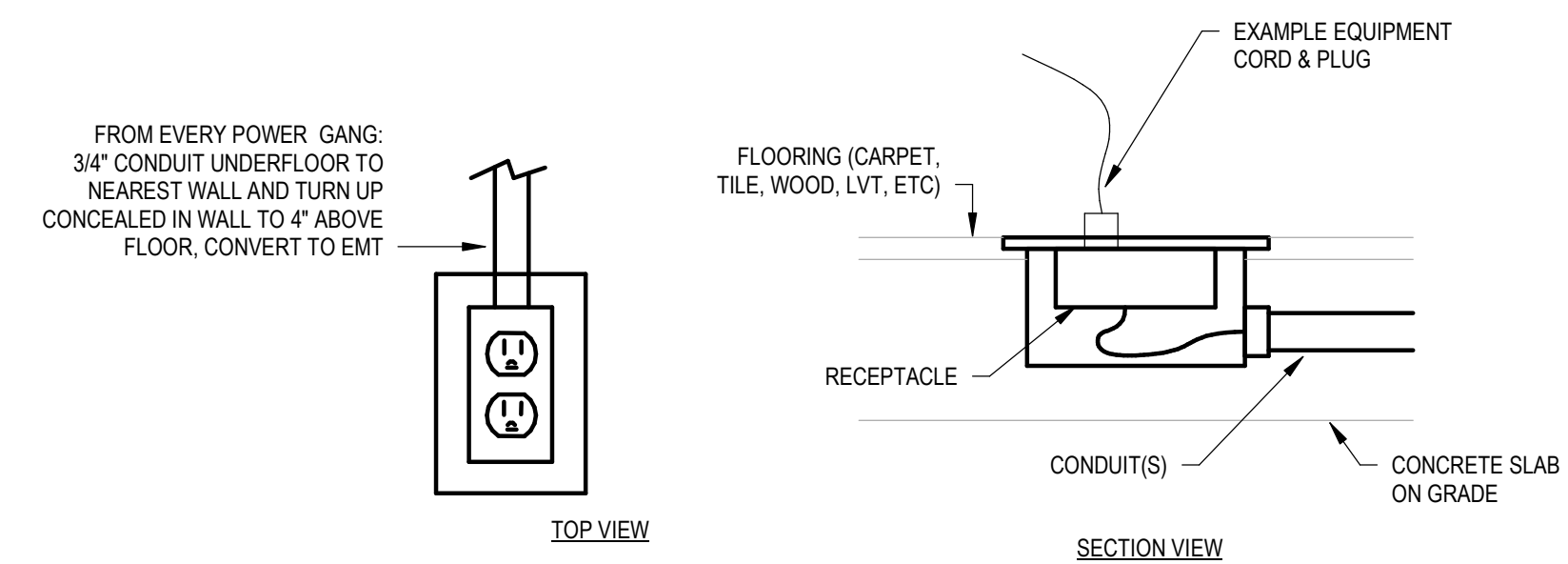
7 WAO MOUNTING DETAIL W/O CABLE TRAY DETAIL
NOT TO SCALE



8 TYPICAL EXTERIOR AC/HP CONNECTION DETAIL
NOT TO SCALE

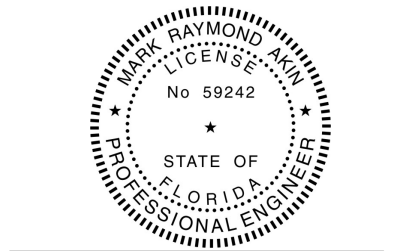


6 MC CABLE DIAGRAM
NOT TO SCALE



- NOTES:
- COORDINATE FLOORBOX WITH GENERAL CONTRACTOR, STRUCTURED CABLING CONTRACTOR, BUILDING STRUCTURE, AND ARCHITECT PRIOR TO INSTALLATION.
 - FINAL LOCATION OF EACH FLOORBOX SHALL BE BY THE ARCHITECT IN THE FIELD.
 - COVERS SHALL BE PAINTED ALUMINUM, ARCHITECT TO SELECT COLOR.
 - COVER SHALL BE EITHER RECESSED/FLUSH TYPE OR SURFACE TYPE. SURFACE TYPE (WHICH HAS A LIP/FLANGE TO OVERLAP THE FLOORING MATERIAL) IS TYPICALLY ONLY USED IN CARPETED FLOORS. ARCHITECT TO SELECT TYPE.
 - BASIS OF DESIGN: CARLON E976RFB. PROVIDE WILL ALL REQUIRED ACTIVATION KITS, ETC. OTHER APPROVED MANUFACTURERS: WIREMOLD, HUBBELL

9 FLOORBOX DETAIL - FLUSH
NOT TO SCALE



TO THE BEST OF THE ARCHITECT'S OR THE ENGINEER'S KNOWLEDGE, THESE PLANS AND SPECIFICATIONS COMPLY WITH ALL CITY, COUNTY, STATE AND FEDERAL BUILDING, ELECTRICAL, MECHANICAL, PLUMBING, AND FIRE SAFETY REGULATIONS AND APPLICABLE FIRE SAFETY DEPARTMENT AND LOCAL AUTHORITY IN THE SECTION AND CHAPTER 635, F.L. STATUTES.



BRADFORD COUNTY SLEEPING
QUARTERS
13641 SOUTHWEST COUNTY ROAD 227
STARKE, FLORIDA 32091

REVISIONS

NO.	DATE	REF.	BY

DRAWING STATUS:
100% CONSTRUCTION DOCUMENTS

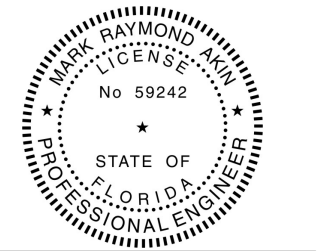
ISSUE DATE:
09/27/2024

DRAWN BY: AKIN
CHECKED BY: AKIN

PROJECT NUMBER:
24064

DRAWING TITLE:
DETAILS

SHEET NO.
E202
DATE/TIME STAMP:
9/30/2024 4:30:11 PM



TO THE BEST OF THE ARCHITECT'S OR THE ENGINEER'S KNOWLEDGE, THESE PLANS AND SPECIFICATIONS COMPLY WITH ALL CITY, COUNTY AND STATE BUILDING, ELECTRICAL AND MECHANICAL CODES AND REGULATIONS APPLICABLE TO THE PROJECT. THE ENGINEER'S LIABILITY IS LIMITED TO THE DESIGN AND CONSTRUCTION OF THE SYSTEMS DESCRIBED IN THESE PLANS AND SPECIFICATIONS. THE ENGINEER DOES NOT WARRANT THE ACCURACY OF THE INFORMATION PROVIDED BY OTHERS. THE ENGINEER'S LIABILITY IS LIMITED TO THE DESIGN AND CONSTRUCTION OF THE SYSTEMS DESCRIBED IN THESE PLANS AND SPECIFICATIONS. THE ENGINEER DOES NOT WARRANT THE ACCURACY OF THE INFORMATION PROVIDED BY OTHERS.



BRADFORD COUNTY SLEEPING QUARTERS

13641 SOUTHWEST COUNTY ROAD 227
STARKE, FLORIDA 32091

REVISIONS

NO. DATE REF. BY:

DRAWING STATUS:
100% CONSTRUCTION DOCUMENTS

ISSUE DATE:
09/27/2024

DRAWN BY: AKIN CHECKED BY: AKIN

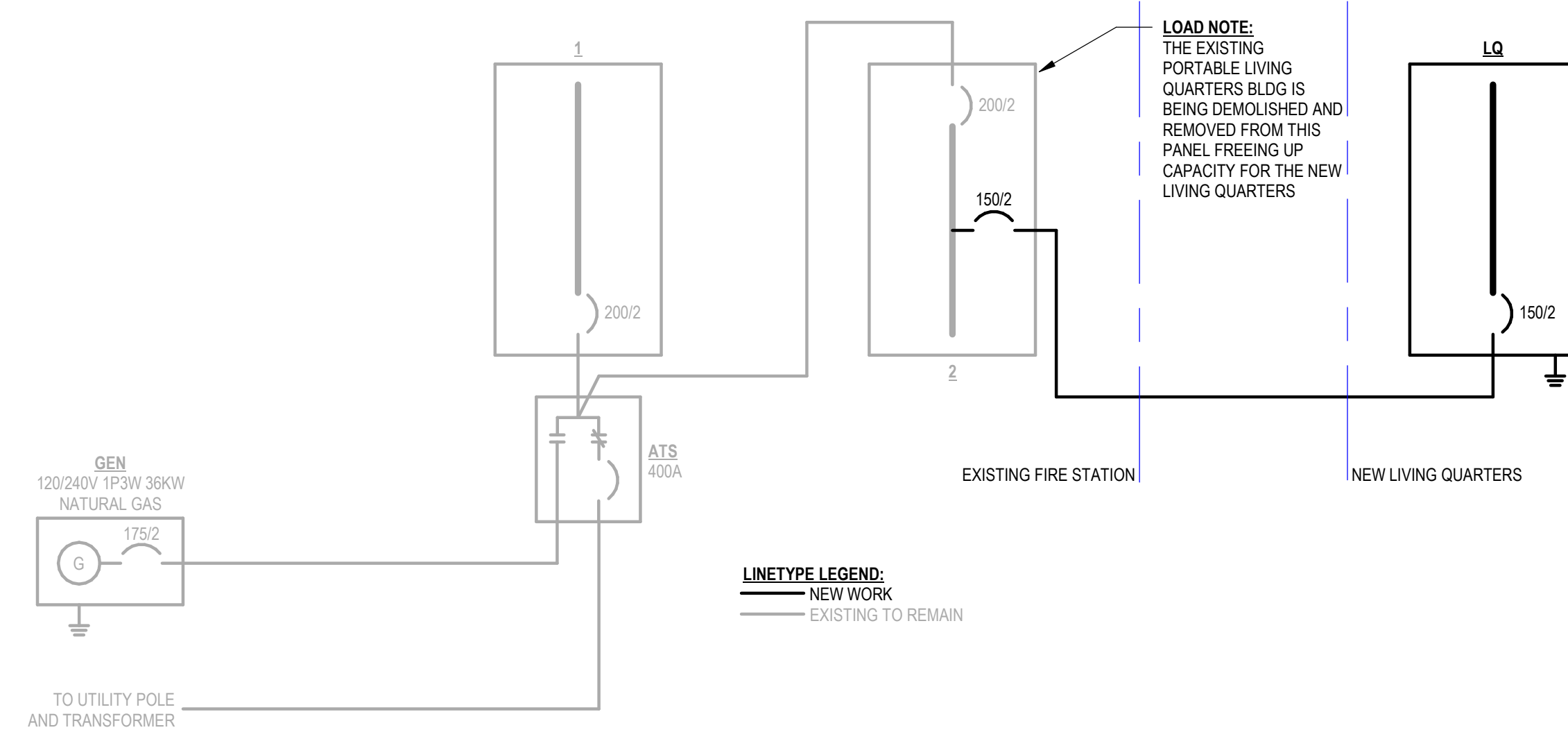
PROJECT NUMBER:
24064

DRAWING TITLE:
SINGLE LINE DIAGRAM & SCHEDULES

SHEET NO.

E301

DATE/TIME STAMP:
9/30/2024 4:30:19 PM



SINGLE LINE DIAGRAM
NOT TO SCALE

BRANCH PANEL: LQ

BASIS OF DESIGN: NO
SUPPLY FROM: EXISTING PANEL
MOUNTING: SURFACE
ENCLOSURE NEMA TYPE: 1
VOLTS: 240/120
PHASES: 1
WIRES: 3
KAIC: 22

BUSS RATING: 150A
MCB OR MLO: MCB
MCB OR MLO SIZE: 150A
NEUTRAL RATING: 100%
PQM: NO
SPD: NO
OF SECTIONS: 1
SERVICE RATED: NO

FEEDER
PHASES: 2#2/0
NEUTRAL: #2/0
GROUND: #6
CONDUIT: 2"
OF RUNS: 1
TOTAL AMPACITY: 150A

NOTES

CKT	DESCRIPTION	TRIP	P	A	B	A	B	P	TRIP	DESCRIPTION	CKT
LQ-1	Receptacle Space 5	20 A	1	1.08 kVA	1.08 kVA	1.08 kVA	1.08 kVA	1	20 A	Receptacle Space 12	LQ-2
LQ-3	Receptacle Space 9	20 A	1	1.08 kVA	1.08 kVA	1.08 kVA	1.08 kVA	1	20 A	Receptacle Space 7	LQ-4
LQ-5	Receptacle Space 6	20 A	1	0.18 kVA	0.18 kVA	0.18 kVA	0.18 kVA	1	20 A	Receptacle Space 3	LQ-6
LQ-7	Receptacle Space 3	20 A	1	0.18 kVA	0.18 kVA	0.18 kVA	0.18 kVA	1	20 A	Receptacle Space 3	LQ-8
LQ-9	WATER HEATER	20 A	1	0.00 kVA	0.36 kVA	0.36 kVA	0.36 kVA	1	20 A	Receptacle	LQ-10
LQ-11	Receptacle Space 20	20 A	1	0.18 kVA	0.18 kVA	0.18 kVA	0.18 kVA	2	30 A	DRYER	LQ-12
LQ-13	Receptacle Space 19	20 A	1	0.90 kVA	0.90 kVA	0.90 kVA	0.90 kVA	1	20 A	Receptacle Space 15	LQ-14
LQ-15	Receptacle Space 18	20 A	1	1.26 kVA	1.26 kVA	1.26 kVA	1.26 kVA	1	20 A	Receptacle Space 17	LQ-16
LQ-17	Receptacle Space 17	20 A	1	0.00 kVA	0.54 kVA	0.54 kVA	0.54 kVA	1	20 A	Receptacle Space 16	LQ-18
LQ-19	Receptacle Space 16	20 A	1	0.36 kVA	0.36 kVA	0.36 kVA	0.36 kVA	1	20 A	Receptacle Space 16	LQ-20
LQ-21	Receptacle Space 16	20 A	1	0.18 kVA	0.36 kVA	0.36 kVA	0.36 kVA	1	20 A	Receptacle Space 16	LQ-22
LQ-23	Receptacle Space 16	20 A	1	0.36 kVA	0.36 kVA	0.36 kVA	0.36 kVA	1	20 A	Receptacle Space 16	LQ-24
LQ-25	Receptacle Space 16	20 A	1	0.18 kVA	0.18 kVA	0.18 kVA	0.18 kVA	1	20 A	Receptacle Space 16	LQ-26
LQ-27	Receptacle Space 16	20 A	1	0.18 kVA	0.18 kVA	0.18 kVA	0.18 kVA	1	20 A	Receptacle Space 16	LQ-28
LQ-29	AHU	15 A	2	0.40 kVA	0.40 kVA	0.40 kVA	0.40 kVA	1	20 A	Lighting	LQ-30
LQ-31	Lighting	20 A	1	0.21 kVA	0.21 kVA	0.21 kVA	0.21 kVA	1	20 A	Lighting	LQ-32
LQ-33	Lighting	20 A	1	0.21 kVA	0.21 kVA	0.21 kVA	0.21 kVA	1	20 A	Lighting	LQ-34
LQ-35	Exterior Lighting	20 A	1	0.08 kVA	0.08 kVA	0.08 kVA	0.08 kVA	1	20 A	Lighting	LQ-36
LQ-37	Spare	20 A	1	0.00 kVA	0.00 kVA	0.00 kVA	0.00 kVA	1	20 A	Space	LQ-38
LQ-39	Spare	20 A	1	0.00 kVA	0.00 kVA	0.00 kVA	0.00 kVA	1	20 A	Space	LQ-40
LQ-41	Spare	20 A	1	0.00 kVA	0.00 kVA	0.00 kVA	0.00 kVA	1	20 A	Space	LQ-42
LQ-43	Spare	20 A	1	0.00 kVA	0.00 kVA	0.00 kVA	0.00 kVA	1	20 A	Space	LQ-44
LQ-45	Spare	20 A	1	0.00 kVA	0.00 kVA	0.00 kVA	0.00 kVA	1	20 A	Space	LQ-46
LQ-47	Spare	20 A	1	0.00 kVA	0.00 kVA	0.00 kVA	0.00 kVA	1	20 A	Space	LQ-48
LQ-49	Spare	20 A	1	0.00 kVA	0.00 kVA	0.00 kVA	0.00 kVA	1	20 A	Space	LQ-50
LQ-51	Spare	20 A	1	0.00 kVA	0.00 kVA	0.00 kVA	0.00 kVA	1	20 A	Space	LQ-52
LQ-53	Spare	20 A	1	0.00 kVA	0.00 kVA	0.00 kVA	0.00 kVA	1	20 A	Space	LQ-54
TOTAL CONNECTED LOAD				9.01 kVA	9.64 kVA	9.01 kVA	9.64 kVA				
TOTAL AMPS				75.0 A	80.3 A	75.0 A	80.3 A				

LIGHT FIXTURE SCHEDULE

TAG	DESCRIPTION	BASIS OF DESIGN			TECHNICAL DATA								QTY OF SPARE FIXTURES AND PARTS			WARRANTY IN YEARS	NOTES
		MANUFACTURER	CATALOG #	OR EQUAL BY	COLOR TEMP	LUMENS	INPUT WATTS	DIMMABLE	VOLTAGE	COLOR	MOUNTING	COMPLETE FIXTURES	DRIVERS	LIGHT ENGINES			
XEB	EDGE-LIT EXIT SIGN W/BATTERY PACK	BEGHELLI	BRU-SA-LG-U-M-AT	PATHWAY EMERGLITE PRESCOLITE	4000K	-	2W	NO	UNIV	MIRROR W/GREEN TEXT	WALL OR CEILING AS INDICATED	1	0	0	5	PROVIDE ARROW AND FACES AS PER PLANS. PROVIDE EMERGENCY NICAD BATTERY BACKUP. MIRROR PANEL BACKING. SELF-DIAGNOSTICS	
24P60	2X4 PANEL	DAYBRITE	2FPZ-60L-840-4-DS-UNV-DIM	COLUMBIA COOPER TGS	4000K	-6000	58W	YES 0-10V	UNIV	WHITE	RECESSED	1	0	0	5	PROVIDE INTEGRAL DRIVER	
4IS55	4' INDUSTRIAL	DAYBRITE	FSI-4-55L-840-UNV	COLUMBIA COOPER	4000K	-5500	41W	NO	UNIV	WHITE	SUSPENDED	0	0	0	5		
6PZ	6" ROUND PANEL	LAUREN ILLUMINATION	LCLCV-6-40-W-HE	COLUMBIA COOPER TGS	4000K	-750	8W	YES 0-10V	UNIV	WHITE	RECESSED	0	0	0	5	PROVIDE WITH REMOTE DRIVER	
3WALL	3' WALL LIGHT	HEW	29-3-L40-80-40-AF	COLUMBIA COOPER	4000K	4000	30W	NO	UNIV	WHITE	WALL	0	0	0	5		
FAN	CEILING FAN WITH LIGHT KIT	TBD	TBD	TBD	TBD	TBD	TBD	TBD	TBD	TBD	CEILING	0	0	0	TBD	PROVIDE \$350 ALLOWANCE PER FAN	

NOTES

FIXTURES WITH HALF FILLED IN CENTER OR SUBSCRIPT EM SHALL BE PROVIDED WITH A BATTERY PACK. PROVIDE UNSWITCHED NORMAL CKT TO BATTERY PACK.
PROVIDE 0-10V WIRES FROM SWITCH/CONTROLLER TO ALL 0-10V DIMMABLE FIXTURES.
IF THERE IS A DISCREPANCY BETWEEN THE NOTES AND THE CATALOG NUMBER, THE NOTES SHALL PREVAIL.
PRIOR APPROVAL SUBMITTALS FOR MANUFACTURERS NOT LISTED MUST BE SUBMITTED TO THE ENGINEER 14 DAYS PRIOR TO BID DATE FOR REVIEW.
WARRANTY SHALL COVER COMPLETE REPLACEMENT OF FAILED PART(S).
SPARE FIXTURES AND PARTS SHALL BE IN SUITABLE BOXES LABELED AND READY FOR STORAGE. QTY INDICATED ARE TOTAL REQUIRED FOR THE FIXTURE TYPE.
MANUFACTURERS NOT LISTED WILL NOT BE ACCEPTED UNLESS APPROVED BY ADDENDUM PRIOR TO BID.